

# Flux Challenge

## Overview

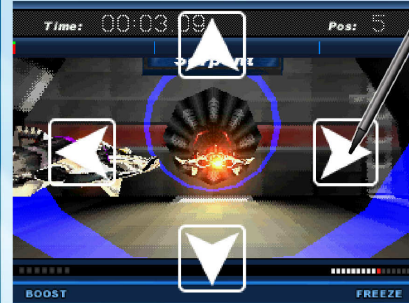
Developed in the '10s and '20s, based on magnetic levitation, Flux became one of today's most popular technical sports through the last fifty years. Though the names of Yahara and Hachinobe are a legend now, we smile at the clumsy looking old magilev ships of their days. With this educating simulation, one can imagine himself in the shoes of our grandfathers and run a magnificent career in the first days of Flux.

## Gameplay

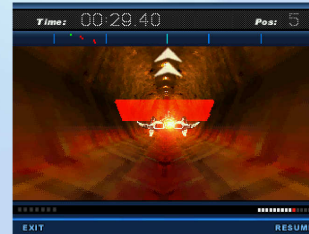
This unique racer revolves around a world of magnetic-levitation tunnels.

Take control of one of these magilev ships, and become the international champion!

## How to Play



To control your ship use your stylus or the the Direction Pad.



Use boost only on longer straight paths.  
Take advantage of the green Speed Bars  
Try to avoid hitting the Red Slug bars, as these slow you down.